



ALASKA DIVISION OF HOMELAND SECURITY & EMERGENCY MANAGEMENT

SITUATION REPORT 23-317 • November 13, 2023



Toll-Free 1.800.478.2337

Anchorage Area 907.428.7000

SEOC 907.428.7100

<p><u>SEOC Preparedness Level</u></p> <p>Level 1 - Routine Operations</p>	<p>http://ready.alaska.gov</p>	<p><u>National Terrorism Advisory System:</u></p> <p>Read the NTAS Bulletin here</p>
<p><u>Maritime Security (MARSEC)</u> Level: 1- Minimum Appropriate Security Measures</p>	<p>WHO Novel Coronavirus Pandemic (COVID-19): 2019 Novel Coronavirus</p>	<p><u>Alaska Military Installation Force Protection Level:</u> FPCON Charlie</p>

(Significant changes from previous situation reports are red.)

Significant Issues:

- SEOC continues to monitor several winter storms throughout the state with various weather advisories: winter storm, high surf, wind, flood warnings, and coastal flooding issued throughout the state.
- JBER, including DHSEM offices closed to all non-essential personnel due to inclement weather. SEOC continues to monitor issues remotely.

State of Alaska Department of Health (DOH)

The DOH stands ready to assist with all aspects of public health and in the event of a public health emergency, supported by the SEOC and other state departments as required. For current information, see:

<https://health.alaska.gov/dph/Pages/default.aspx>

<https://health.alaska.gov/dph/Emergency/Pages/prepared/default.aspx>

NTAS Bulletin

The U.S. Department of Homeland Security issued an updated National Terrorism Advisory Bulletin on May 24, 2023. The current and expired bulletins can be viewed at the below link.

<https://www.dhs.gov/national-terrorism-advisory-system>

Travel Alerts and Conditions

For current driving conditions, dial 511 or link to <https://511.alaska.gov/>

Barry Arm Landslide / Tsunami Risk

For the latest information on the Barry Arm Landslide and Tsunami risk, click here:

<https://dggs.alaska.gov/hazards/barry-arm-landslide.html>

Earthquakes

United States Geological Service (USGS) Earthquake Information: <http://earthquake.usgs.gov/>
National Tsunami Warning Center: <http://tsunami.gov/>

Alaska Volcanoes

Great Sitkin Alert Level: **Watch** and Aviation Color Code: **Orange**

Bogoslof Alert Level: **Advisory** and Aviation Color Code: **Yellow**

Shishaldin Alert Level: **Watch** and Aviation Color Code: **Orange**

Trident Alert Level: **Advisory** and Aviation Color Code: **Yellow**

For Alaska Volcano updates, go to: <https://www.avo.alaska.edu/>

Air Quality Index (AQI) Advisories

For the most up to date Air Quality Index Advisories:

<http://dec.alaska.gov/Applications/Air/airtoolsweb/Home/Index>

Spills of Oil and Hazardous Substances

The Alaska Division of Environmental Conservation (ADEC) Spill Prevention and Response page is located at:

<https://dec.alaska.gov/spar/>

Alaska Cyber Security Information

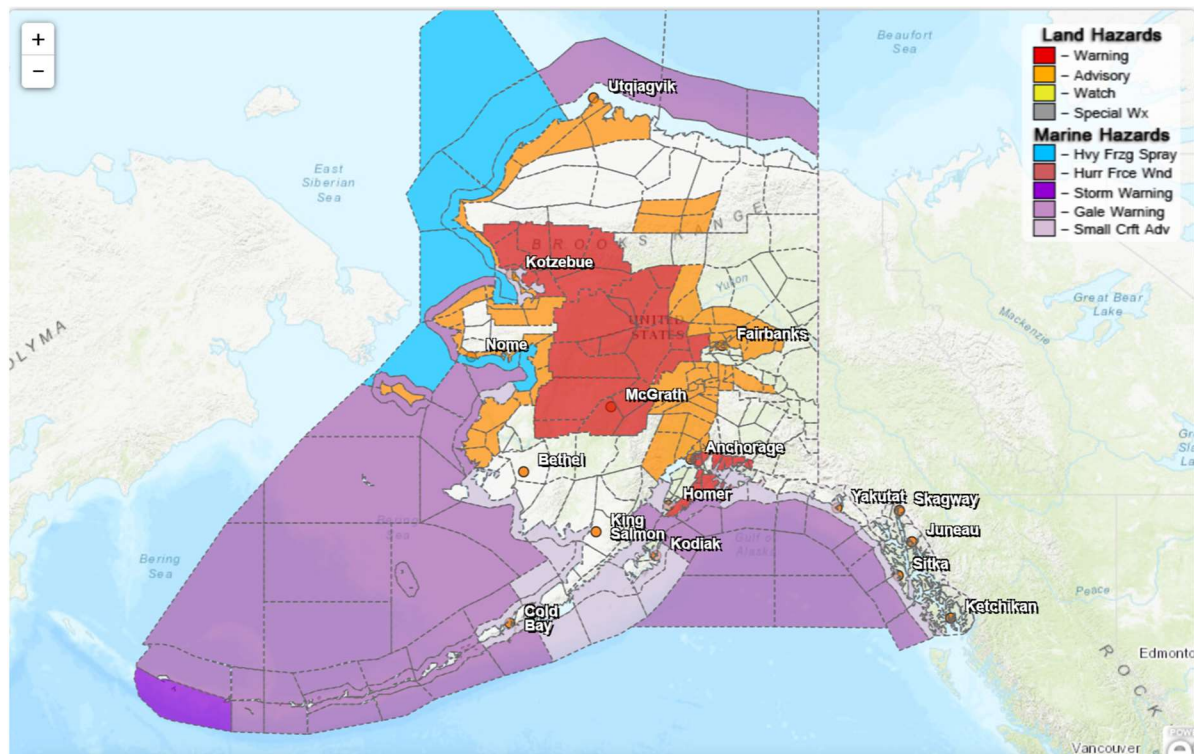
State Employees may sign up for cyber security notifications and alerts at

<https://oit.alaska.gov/security>

Cybersecurity and Infrastructure Security Agency (CISA)-Cybersecurity Services and Tools:

www.cisa.gov/free-cybersecurity-services-and-tools

Significant Weather:



Winter Storm Warnings:

- **South Slopes of the Western Brooks Range; Upper Kobuk Valleys; Lower Koyukuk Valley; Middle Yukon Valley; Lower Yukon and Innoko Valleys; Anchorage; Upper Koyukuk Valley; Central Interior; North Slopes of the Western Alaska Range; Upper Kuskokwim Valley; Lower Kobuk Valley** – warning remains in effect until noon today.
- **Noatak Valley** – warning remains in effect until Tuesday morning at 6AM AKST.

Blizzard Warning:

- **Northeast Prince William Sound** – warning in effect from 1PM to 9PM AKST today for Thompson Pass.
- **Western Prince William Sound** – warning in effect from 10AM to 4PM AKST today for Whittier.

Wind Advisories:

- **Northern Denali Borough; Southern Denali Borough; Eastern Alaska Range South of Trims Camp** – advisories in effect until noon today.

Winter Weather Advisories:

- **Matanuska and Susitna Valleys; Dalton Highway Summits; Central Brooks Range** – advisory in effect until noon today.
- **Upper Chena River Valley; Chatanika River Valley; Two Rivers; White Mountains and High Terrain South of the Yukon River** – advisories in effect until 9PM AKST this evening.
- **Goldstream Valley and Nenana Hills; Fairbanks Metro Area** – advisories in effect until 3PM AKST this afternoon.

Coastal Flood Advisories:

- **Southern Seward Peninsula Coast; Bering Strait Coast; Eastern Norton Sound and Nulato Hills; Yukon Delta Coast** – in effect until 6AM AKST Tuesday.

High Surf Advisories:

- **Northwest Arctic Coast; Northern Arctic Coast** - 9AM Monday to midnight AKST Tuesday night.
- **Northern Seward Peninsula; Western Arctic Coast; Kivalina and Red Dog Dock; Lower Kobuk Valley; Baldwin Peninsula** – advisory in effect until 3PM AKST Tuesday.
- **Shishmaref** – advisory in effect until 9AM AKST Tuesday.
- **St Lawrence Island** – advisory in effect until 6AM AKST Tuesday.

For more information and the most current weather, Watches / Warnings / Advisories go to:

<https://www.weather.gov/arh/>

The Next Situation Report will be **November 14, 2023**. A significant change in the situation or the threat level will prompt an interim report. This report is posted on the internet at

<https://ready.alaska.gov/sitrep>.

To register for email distribution, go to <http://list.state.ak.us/mailman/listinfo/dhsem.situation.report>. Direct questions regarding this report to the SEOC at 907-428-7100 or seoc@alaska.gov